


Audit Report

Global Manufacturer Certificate



Manufacturer:	Guangdong Leshan Machinery Co., Ltd. 广东乐善机械有限公司		
Factory Address:	No.4 Xinhui Road, Wushan, Daliang, Shunde District, Foshan, Guangdong, China		
Factory Representative:	Guo Xinan		
Site(s) audited:	Same as factory address	Date of Issue:	11 April,2013
Standard(s):	2nd Party Audit in Terms of the Checklist of GlobalMarket		
Audited by:	Jonthon Liao	Reviewed by:	George Yang/ Grace Huang
The Audit Results : GMC (Only Assessed by GMC Audit Committee)			
Confirmed by GMC Audit Commissioner: 			
This report is confidential and distribution is limited to GlobalMarket representative and the TUV office.			

Audit Report

Global Manufacturer Certificate



Index

Factory Profile

General Information
Finance Condition
Banking Relationship
Payment
Factory Coverage & Buildings
Employee Division
Working Hour
Main Production Facility / Machine
Manufacture Process Covered in the Audit Process
Organization Chart of the Factory

Checklist & Results

1. Genuine Manufacturer
2. Capability of Providing High-quality Products
3. Considerable Company Size
4. Sales & Marketing Capability
5. Research & Development Capability
6. Corporate Social Responsibility
7. Trustworthiness & Reputation
8. Customer Service Capability

Gap Analysis

Factory Tour

Final Evaluation

End of Report

Audit Report

Global Manufacturer Certificate



Factory Profile:

General Information:

Registered Capital:	RMB 10,010,000.00
Time of Establishment:	1995/08/28
Factory Nature:	Limited liability company
Background of Factory (Ownership)	The factory is the applicant of GMC audit
Main Products:	Digital Control Blow Molding Machines, Plastic Mould and Polystyrene Foam Granulator
Target Market:	Global
Export Market:	Middle East; Africa;Southeast Asia; East europe
Sold Method:	Direct export to oversea market
Cooperated Key Buyer:	keep confidential by factory
Order Quantity from Key Buyer:	keep confidential by factory
GMC Audit Report No.:	16031577

Finance Condition:

Total Assets	Confidential
Profitability Ratios: [Net profit before tax / Turnover × 100%]	Confidential
Asset Management Ratios: [Total assets turnover: Turnover / Total assets]	Confidential

Banking Relationship:

Banking relations are maintained principally with	Shunde Rural Commercial Bank
A/C No.:	01488800013106
Tel:	N/A
Taxes No.:	440681231947007

Banker(s) opinion:

Normal:	It means that SC has maintained a normal relationship with its bankers. Its bankers have recorded nothing detrimental against SC.
Note:	
SC:	Super Centre of Bank, a ERP Software

Audit Report

Global Manufacturer Certificate



Payment:

Export Payment Terms:	T/T, L/C
Export Price Terms:	FOB Shunde or Shenzhen; CIF
Domestic Sales Payment Terms:	T/T
Purchasing Payment Terms:	Cash, 30 days credit

Factory Coverage & Buildings:

Total area:	100,000
Production area and warehouse:	One 3-storey building
Office:	One 6-storey building
Accommodation:	One 6-storey building

No. of Employee:

Foreign Trade & Export:	7
Domestic Sales & Marketing:	32
Design/R&D:	17
Manufacturing:	128
Quality Control:	8
HR/Admin :	7

Working Hour:

The daily working-hour starts from 8:00 to 17:30 ; from Monday to Saturday .
Lunch-hour starts from 11:30 to 13:00 ; Overtime starts from 18:30 to 21:00 (sometimes) .

Main Production Facility / Machine:

Audit Report

Global Manufacturer Certificate



<u>ITEM</u>	<u>QUANTITY</u>	<u>CONDITION</u>
lathe	8	In Operation
CNC lathe	20	In Operation
Machining center	15	In Operation
Try vertical milling machine	11	In Operation
Boring machine	3	In Operation
Flash machine	5	In Operation
Surface grinding machine	3	In Operation
Cylindrical grinding machine	2	In Operation
Radial drill	5	In Operation
Drilling and tapping machine	8	In Operation
Bench drilling machine	10	In Operation
Electric saw machine	3	In Operation
Cutting machine	4	In Operation
Shearing machine	3	In Operation
Bending machine	1	In Operation
Beer machine	1	In Operation
Electric welding machine	11	In Operation
Sandblasting machine	1	In Operation
Crane	17	In Operation

Audit Report

Global Manufacturer Certificate

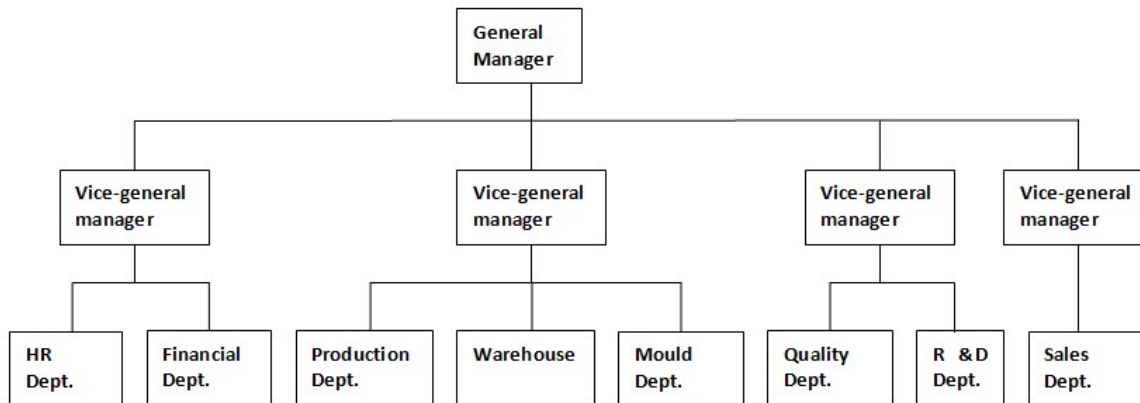


Manufacturing Process Covered in the Audit Process:

Pattern design → BOM technique → Order material → Roughing machining → Heat treatment → Fine finishing → Inspection → Assembly →
Inspection → Packing → Delivery

Organization Chart of the Factory

Organization Chart of the Factory



Checklist and Results

Note:

The Judgments means that results are complied with the requirements based on the evidences.
(Yes ---- conformity, No --- inconformity, N/A--- Not Available / Not Applicable, Ref.---Reference)

I. Genuine Manufacturer

Checking Item	Checking Points	Description of On-site Evidences or Comments	Judgments
Valid of Business Registration	Does the factory have Business Registration?	The factory provided the valid business registration. The registration number: 440681000265411	Yes
	Does the registered company address comply with the actual situation?	The registered company address complies with the actual situation.	Yes
	Do the registered company name and business scope comply with the actual situation?	The registered company name and business scope comply with the actual situation.	Yes
	Is an annual review done?	The annual review was finished already. Review date: 2013	Yes
	Is Business Registration still valid?	The business registration is still valid. Its valid period: Forever	Yes

Audit Report

Global Manufacturer Certificate



	Who is the Legal Representative?	The name of legal representative is Mr.Guo Xinan.	Ref.
	Is the factory a subsidiary? If it were YES, what is the name of its parent company?	The factory was not a subsidiary.	No
Tax Registration Certificate	Does the factory have Tax Registration Certificate?	The factory got the Tax Registration Certificate. Certificate number:440681231947007	Yes
Articles of Incorporation	Confirm the division of shareholders'equity	Confirmed	Ref.
Conclusion	It is confirmed that the factory is a real manufacturer.		Yes

II. Capability of Providing High-quality Products

Checking Item	Checking Points	Description of On-site Evidences or Comments	Judgments
ISO9001 or Other Equivalent Quality Management System ISO9001	Is the factory certified with ISO9001 or other equivalent Quality Management System?	The factory has been certified with ISO9001 Certificate No.: Q18130405 Certificate body: DAS Issued date: 2013.04.03	Yes
	Does the certification scope comply with the actual situation?	The scope of ISO9001 certificate is "The Design, Manufacture and Service of Digital Control Blow Molding Machines, Plastic Mould and Polystyrene Foam Granulator".	Yes
	Is the Certificate still valid?	The certificate is still valid until 2016.04.02	Yes
	Is surveillance done accordingly? Have all opened major CAR been closed?	The surveillance is done accordingly, and all opened major CAR were closed.	Yes
	Has the factory provided the copy of certificate and the recent audit report?	The factory provided the copy of certificate and the recent audit report.	Yes
	Is the Internal Audit of QMS [Quality Management System] proceeded according to documented procedure and plan?	The factory proceeded the internal audit of QMS in the past time according to written procedure and plan. Latest internal audit date: 2012-11-20/21 Management review record: Provided	Yes

Audit Report

Global Manufacturer Certificate



	Is the latest internal audit report kept? Have all opened major CAR been closed?	The factory kept latest report, as well as corrective action plan. According to non-conformity record, there was no major finding during internal audit.	Yes
	Does the factory maintain a record of the Internal and External Corrective Action?	The factory provided the internal and external follow-up corrective action records regarding latest non-conformity record put forward internally and externally.	Yes
Quality Control System	1. Supply Chain Management		
	Does the factory conduct the assessment when changing or adding a new suppliers/sub-contractor? Does the factory keep the assessment report?	The factory conducted the assessment when changing new supplier/sub-contractor.	Yes
	2. Raw Material Quality Management		
	Does the factory set up any inspection standards for raw material?	The factory provided the inspection standard for raw material.	Yes
	Does the factory set up the guidelines for raw material management?	The factory set up a simple guideline for raw material management.	Yes
	Does the factory have any measure to control the management of unqualified material after sampling, to avoid mixing up or wasting?	Per observation, unqualified material will be stored at designated and clearly labeled area to protect from unauthorized use.	Yes
	3. Production Process Management		
	Does the factory regulate the production process involved?	The factory provided the WI for each work station.	Yes
	How does the factory make the staff know better about the operation within their position?	The factory provided the training records of different work process. For some important positions, exam paper with result was available.	Yes

Audit Report

Global Manufacturer Certificate



4. Staff Qualification Verifying		
Is the management and usage of production materials as well as the production process executed by the staff who is appropriately trained and qualified or by the senior staff?	The factory provided the training records on the management and usage of production materials as well as the production process.	Yes
Are all staff in factory appropriately trained and qualified for their position?	For special instrument working staff, qualification certificate was checked on site.	Yes
5. Production Equipment Management		
Is the production equipment clearly marked with its status, maintenance means, service lifespan, and circle of competence?	The machine maintenance record was available on site; routine checking point and frequency were clearly recorded.	Yes
6. Quality Control Of Production Process		
Has the factory set up necessary quality inspection standards in the process of production?	The factory provided quality inspection standards in the process of production when checking IPQC online record.	Yes
(2) Is there any in-process quality inspection?	IPQC record was available during plant tour.	Yes
Is there any standard and record of checking point sampling?	Checking point sampling record and standard were checked in IPQC record already.	Yes
7. Quality Control of Production Process		
Does the factory conduct necessary inspection standards to ensure the quality parameter?	The factory conducted the final quality control.	Yes
Is the inspection recorded?	The FQC record was available	Yes

Audit Report

Global Manufacturer Certificate



8. Quality Control of Packaging

Is the cargo packaging consistent with the buyer's requirement?	The cargo packaging was consistent with buyer's requirement.	Yes
Is the quantity of the cargo in package consistent with the contract?	Via the communication with package workshop leader, quantity of cargo in package was consistent with contract.	Yes
Is there any environmental risk during the packaging process, such as pollution, damage, etc?	Per packaging process tour, it was noted that no obvious environmental risk exists during packaging process.	Yes

9. Management of Finished Goods Warehouse

Does the factory set up the warehouse management for finished goods?	The factory set up the warehouse management regulation for finished goods.	Yes
Is the product clearly marked with its physical and chemical safety, such as warehouse management discipline, cargo Mark Rules, etc.?	Per finished warehouse tour, it was noted all finished products were clearly labeled. For special products, physical and chemical safety warning were posted at visible area.	Yes

Audit Report

Global Manufacturer Certificate



Product Certification / Test Report	Does the factory hold product certification and/or valid manufacturer license for their main products?	Evidence was provided to show that the factory holds product certification. CE certificate: Certificate No: CTM10050024 Product: K SERIES DIGITAL CONTROL PLASTIC BLOW MOULDING MACHINE Model: SCJ-75K+S2x6.5D-A Testing standard: EN ISO 12100-1:2003+A1:2009 EN ISO 12100-2:2003+A1:2009 EN ISO 14121-1:2007 EN982:1996+A1:2008 EN983:1996+A1:2008 EN422:2009 EN60204-1:2006 Issue date: August.23th, 2010 Certificate body:CIC	Yes
	Does the factory have the product testing report issued by the third party to evaluate safety/function of their products? If there is any, list the details.	The factory has the product testing report issued by the third party to evaluate safety of their products as below: Report No.:SJ122202 Certificate body: Guangdong testing institute of product quality supervision Product: Blow Molding Machines Test Standard: GB23821-2009; GB12265.3-1997; JB/T8539-1997; Q/LSH 004-2010 Issued date: 2012.12.09	Yes
Conclusion	The factory has the ability of providing high-quality products.		Yes

III. Considerable Company Size

Checking Item	Checking Points	Description of On-site Evidences or Comments	Judgments
Capacity Assessment	If the financial report is kept confidential, what is the assessment value of annual production capacity in the factory?	The estimated production capacity is RMB204,480,000 per year, namely USD31.45 million per year. The copy of Company Size Evaluation Table was submitted to TUV & GMC Audit Committee.	Yes
Financial Statements	If the financial report is available, how much was the total revenue last year? (Time period is based on previous year or 12 months prior to on site audit)		N/A

Audit Report

Global Manufacturer Certificate



Output at Present	What percentage does current production capacity account for the total output capacity?	80%	Ref.
Conclusion	The revenue / output value of factory has met the requirements.		Yes

IV. Sales & Marketing Capability

Checking Item	Checking Points	Description of On-site Evidences or Comments	Judgments
Marketing Team	Does the factory have a sales & marketing team? Does the factory set up its sales network?	The name list of sales & marketing team was provided.	Yes
Marketing Information System	Does the factory collect and analyze necessary information for marketing expansion?	The market Dept. collected and analyze the research data, and further decision on market expansion will be based on out-put result.	Yes
Marketing Strategy	Does the factory have a specific, explicit, phased, strategic target as a marketing objective?	The factory management indicated a specific, explicit, phased, strategic target as a marketing objective regarding current products.	Yes
	Does the factory have any further subdivision within their target market based on the product features?	The market director indicated their products do have diverse market segments. It targets to global.	Yes
Marketing Tactics	Has the factory adopted any pricing tactics to boost sales?	The factory adopted specific pricing tactics, while it is confidential to third party.	Yes
	Has the factory set up a considerate dealer management mechanism, namely the tactics of sales channel management?	The factory set up a considerate dealer management mechanism, namely the tactics of sales channel management	Yes
Marketing Implement Assurance	Does the sales & marketing department have an appropriate organizational structure and a clear marketing management system to divide the rights, responsibilities and benefits?	The sales and marketing department provided the appropriate organizational structure and a clear marketing management regulation to allocate duty and rights.	Yes
	Does the factory have a system of recruitment, appointment, training, assessment, reward and punishment for the sales & marketing team?	The factory management provided a regulation of recruitment, appointment, training, assessment, reward and punishment for the sales & marketing team.	Yes

Audit Report

Global Manufacturer Certificate



Marketing Benefit	Has the sales growth rate kept growing over the past 2 years? What is the sales growth rate of prior year?		N/A
	Has the sales profit ratio kept growing over the past 2 years? What is the percentage of sales profit ratio of prior year?		N/A
Foreign Trade Capacity	Is a name list with education level and working experience records of foreign trading staff kept?	The name list of 7 foreign trading staff with education level and 1-8 years' working experience records was submitted.	Yes
	Do the trading staff have adequate English level and foreign trading experience based on interview question (e.g. Do the staff know what L/C and FOB is)?	The foreign trading interviewee has adequate English level and experience for trading.	Yes
	Are the staff acquainted with the features of the products and can introduce the products to buyers?	The interviewee is acquainted with the features of the products and can introduce products to the buyers.	Yes
	Do the trading staff clearly know the responsibilities and trading jobs?	The trading interviewee clearly knows the responsibilities and trading jobs.	Yes
Conclusion	The factory has the marketing ability to expand its market.		Yes

V. Research & Development Capability

Checking Item	Checking Points	Description of On-site Evidences or Comments	Judgments
Research & Design Capability R&D	Was the name list of R&D Staff with education, experiences and job duties showed and copied to the auditor?	The name list of 17 R&D staff with education, 1-13 years' experience and job duties was copied.	Yes
	Is product development schedule followed?	The R&D interviewee clearly described the general development schedule for their production.	Yes
	Is there a effective design system/ flow?	Design system was available, and it was noted that workflow was being carried out as regulated.	Yes

Audit Report

Global Manufacturer Certificate



	Has the factory had successful projects? (e.g. Patent Certificate for at least one product)	The factory has had successful R&D projects, such as the Patent Certificate of A kind of double-position automatic bottle blowing machine bottle blowing control method Patent No: ZL 2003 1 0112419.8; Issued date: 2007.05.16; Certificate body: State Intell	Yes
Process Capability	Does factory offer a good manufacturing flow?	The factory provided clear and effective manufacturing workflow.	Yes
	Is there an effective and proper SOP(or WI) for each process station?	WI was available in each workshop. Per observation, employee could basically follow the SOP instruction.	Yes
Equipment, Tooling and fixture management	Is there an adequate instruction for each equipment?	Enough WI for each equipment was available.	Yes
	Are equipments maintenance practices documented, adequately defined and followed?	Equipment management regulation was provided with document number:LS/GS.GB.038-2013A/101	Yes
	Is the testing equipment calibrated in time?	Test and detecting tools were calibrated and labeled.	Yes
FA	Is there RMA criterion?	Have criterion for RMA is available	Yes
	Is there FA and the method of the obviate?	There was some record available for FA.	Yes
	Are there special engineers for failure analysis?	One technical team will be responsible for failure analysis.	Yes
Conclusion	The factory has R&D ability to ensure the sustainability of its product development.		Yes

VI. Corporate Social Responsibility

Checking Item	Checking Points	Description of On-site Evidences or Comments	Judgments
Child Labor	Is it confirmed that there's no child labor in the factory?	Child labor was not found during document review and plant tour.	Yes

Audit Report

Global Manufacturer Certificate



	Does the factory have a clear job management program, and take effective measures to verify the age of the employees?	Employment recruitment policy was issued, indicating any one below legal minimum age was not allowed to be employed.	Yes
Forced Labor	Do the staff clearly know the terms of labor contract, regulations of the factory and the right of free employment?	According to the interview with employee sampled, she/he had already signed the labor contract, and well noted all clauses.	Yes
	Have the staff been forced to work overtime? Will they be fined or fired if they refuse to ?	According to employee interview, worker was not forced to overtime after work and no punishment if overtime was rejected.	Yes
Health and Safety	Has the factory established a safety responsibility system, and distributed to all levels of supervisor and provided them with appropriate training?	The factory provided the safety procedure/regulation Safety Officer: The safety committee will be responsible for safety issue in the factory and training provision.	Yes
	Does the factory conduct regular inspection of the plant and equipment, to ensure the health and safety of the workshop at least in accord with the law?	Workshop leader will conduct regular inspection of the plant and equipment, to ensure the health and safety of the workshop at least in accord with the law.	Yes
	Does the factory regularly provide necessary safety and health training, to make the staff understand that there might be occupational hazards in their work, and take appropriate protective measures when necessary? (For example, how to use personal protective equipment safely, etc.)	Necessary safety and health training was provided to employees regularly to make sure potential occupational hazards could be realized in their daily work. At the same time, enough and free PPE were provided in the workshop.	Yes
	Does the factory hold regular fire drill, including fire drill and evacuation drill? Do the staff know how to give an alarm, how to evacuate and how to use the fire extinguisher?	There were two fire drills and evaluations organized in the past twelve months. First Fire drill and evacuation date: 2012.5 Second Fire drill and evacuation date: 2012.10	Yes

Audit Report

Global Manufacturer Certificate



	Does the factory have the approval report about safety construction which is issued by local Fire Bureau?	The factory has the fire inspection report issued by Shunde City Police and Fire Brigade.	Yes
	Does the factory provide adequate first aid equipment? Are first-aid kit and trained first-aiders available in each workplace?	Per plant tour, it was noted that first-aid kit was available in the workshop and office. Meanwhile, trained first-aiders were arranged in each shift.	Yes
	Does the factory provide clean lavatory, separating men's and lady's?	The factory provided clean lavatory, and toilets for men and woman were separated.	Yes
	Does the factory provide clean drinking water to the staff? Any restrictions on drinking water?	The factory provided clean and free drinking water to the staff. There was no restriction to the drinking water based on the onsite observation.	Yes
Environmental Protection And Energy Management	1. Environmental Impact Assessment		
	Does factory have Environmental Impact Assessment report? Is it regularly reported to government or appropriate public authority? If Yes, please give details.	The environment assessment report was approved by Shunde City Environment and Protection Bureau on 2011.3.3 with report number 良20110072	Yes
	2. Pollutant Emission Permit		
	Does the factory have the pollutant emission permit issued by the Environmental Protection Bureau?	The pollutant emission permit was approved by Environmental Protection Bureau with permit number: 4406062011000143	Yes
	3. Water Management		
	Does factory have permits for water use? If Yes, please give details.		N/A
Certifications & Reports	Has the factory ever been certified with SA8000?	The factory did not certify with SA8000.	No
	Has the factory ever been certified with ISO14001?	The factory did not certify with ISO14001.	No
	Has the factory ever been certified with OHSAS 18001?	The factory did not certify with OHSAS18001.	No
Conclusion	The factory is taking its social responsibility.		Yes

Audit Report

Global Manufacturer Certificate



VII. Trustworthiness & Reputation

Checking Item	Checking Points	Description of On-site Evidences or Comments	Judgments
Credit or Goodwill	Is the factory of good credit standing, lawful operations? Are there any illegal operation found?	The factory has signed the declaration of No illegal records or fraud in business behavior which is drafted by GlobalMarket.	Yes
	Does the factory have any fraud in business behavior or damage in bank credit in the past?	The factory was not involved any fraud in business behavior or damage in bank credit in the past.	Yes
	Has the factory run into any dispute of intellectual property, etc?	The factory was not involved in any dispute of intellectual property, etc.	Yes
	Has the factory obtained any award from local government, industry institute or local chamber of commerce in the passed two or three years?	The factory obtain some awards from local government, industry institute and local chamber of commerce.	Yes
Enterprise Honor	[CICB] Famous Trademark Enterprise	Have Famous Trademark Enterprise	Ref.
	[CICB] Enterprise Loyally Abiding by Contracts and Credits	Have Enterprise Loyally Abiding by Contracts and Credits	Ref.
	[BQS] China Famous Brand Products Enterprise	Have China Famous Brand Products Enterprise	Ref.
	[BQS] Enterprise of Inspection Exemption for Export Products	Have not Enterprise of Inspection Exemption for Export Products	Ref.
	[BQS] Enterprise of Guangdong Top Brand Product	Have Enterprise of Guangdong Top Brand Product	Ref.
	Quality Awards from the Government	Have Quality Awards from the Government	Ref.
Conclusion	The factory enjoys a certain reputation and goodwill.		Yes

CICB: China Industrial and Commercial Bureau
BQS: Bureau of Quality Supervision

VIII. Customer Service Capability

Audit Report

Global Manufacturer Certificate



After-sales Service	Is there any appointed team or staff mainly responsible for the after-sales service within the factory?	After-sale team had been built up.	Yes
	Does the factory have SOP (standard operation procedure) for after-sales service?	After-sales service management regulation was available.	Yes
	Does the factory provide any technical support, e.g. telephone counseling, on-site service?	The factory provided technical support. (E.g.: Factory management assigned a specialist to feedback customer once technical inquire reached via telephone.)	Yes
	Does the factory have any process flow for RMA?	The factory had process flow for RMA.	Yes
	Does the factory provide after-sales consulting service?	Sales team will be the contact window during after-sales period. While, professional reply will be provided by R&D Dept.	Yes
Warranty Policies	Does the factory implement the provisions of the National Three Warranties (warranty for repair/replacement /return) for their products?	The factory implemented the provisions of the National Three Warranties (warranty for repair/replacement /return) for their products.	Yes
	Does the factory have its commitment on the customer services of their products?	Service commitment to customer will be definitely promised since initial communication.	Yes
Capability of Complaint Handling and Feedback	Has the factory set up any procedure for handling customer complaints or feedback?	Procedure for handling customer complaints was available.	Yes
	Does the factory regularly assess the procedure for complaint handling or feedback, to ensure it an effective, efficient and continuous improvement?	Monthly compliant records review meeting will be organized by sales Dept. and management Dept. Root reasons analysis and corrective action plan will be confirmed by then.	Yes
	3. Is there any qualified staff appointed to be responsible for complaint handlings and feedbacks?	Qualified staff was appointed to be responsible for compliant handlings and feedback.	Yes

Audit Report

Global Manufacturer Certificate



OEM/ODM/OBM Experience	Is it contracted volume of OEM*?	It is accounted 0% for OEM.	Ref.
	2.Is it contracted volume of ODM*?	It is accounted 0% for ODM.	Ref.
	Is it contracted volume of OBM*?	It is accounted 100% for OBM.	Ref.
	Based on the current equipment and resources, how many years'experience of production and delivery does the factory have on OEM/ODM?		Ref.
Conclusion	The factory has customer service capability.		Yes



Gap Analysis

According to the above-mentioned gap analysis for the factory, what areas do they need to further improve?

11	It is suggested that the factory should better obtain SA8000,ISO14001,OHSAS18001 certificate to improve its competitiveness.
----	--

Audit Report

Global Manufacturer Certificate



Factory Tour

The relevant on-site photos and audit documents are as follows



Factory gate



Office



Production area 1



Production area 2



Production area 3



Production area 4

Audit Report

Global Manufacturer Certificate



Production area 5



Production area 6



Production area 7



Production area 8



Production area 9



warehouse 1

Audit Report

Global Manufacturer Certificate



warehouse 2



warehouse 3

Audit Report

Global Manufacturer Certificate



Final Evaluation

Audit No.	Company Name	Result
16031577	Guangdong Leshan Machinery Co., Ltd.	GMC

Qualification

Audit Module	Result
Genuine Manufacturer	Yes
Capability of Providing High-quality Products	Yes
Considerable Company Size	Yes
Sales & Marketing Capability	Yes
Research & Development Capability	Yes
Corporate Social Responsibility	Yes
Trustworthiness & Reputation	Yes
Customer Service Capability	Yes

Notes

- The evaluation of the above results is not a certificate.
The official certificates will be issued later to the passed manufacturer.
- There are three classes of the results, Passed GMC, Passed Quasi-GMC and Fail.
Only the passed manufacturer will be obtained the official certificate from Global Market Group (Asia) Ltd.
- Global Market Group (Asia) Ltd reserves the right to amend the information given before issuing of certificates or endorsements to the passed manufacturers

End of Report